



## CLUTCH DISC FACING CONTAMINATION **TIPS + TRICKS**

**PART numbers**

ALL Valeo Clutch Kits

ALL Applications

### COMMON CAUSES FOR CONTAMINATION OF CLUTCH DISC FACING

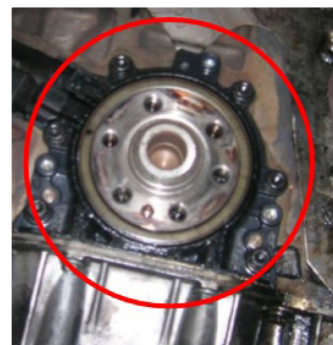
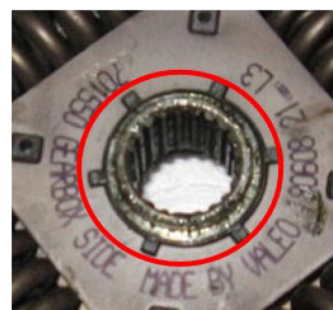
#### 1. Using too much grease during installation of the clutch disc or release bearing

- Use only the included Valeo grease pack for lubricating the disc splines and release bearing.
- Apply a thin film of grease to splines and inner bearing sleeve. Wipe off any excess.
- To avoid potential contamination, wipe off all surfaces outside of the splines and inner bearing sleeve that can spread from rotational force during operation.

#### 2. Leaking rear main seal (crank shaft seal)

- Before installing a new clutch kit, inspect and/or replace the engine rear main seal if leaks or damages are detected.
- It is recommended to replace the rear main seal when performing a clutch kit installation to avoid having to prematurely perform the repair procedure again.

**\*NOTE: Clutch kit failure due to grease contamination will not be covered under warranty**



**Customer Service:** Call 1-888-718-2536 or email us at: [vsus.customerservice.mailbox@valeo.com](mailto:vsus.customerservice.mailbox@valeo.com)